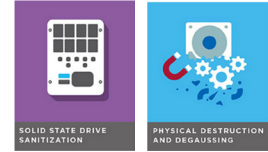


Combo HDD/SSD Shredder

Dual Chamber Models



Dual Cutting Chambers Destroy Both SSD & HDDs



These powerhouses securely destroy Solid State Drives (SSD) on one side and Hard Drives (HDD) on the other. Each chamber has its own infeed slot, discharge bin & shred width. Both AMS 150 HD-SSD and AMS 300 HD-SSD models will shred most standard HDDs up to 1" thick, in addition to backup tapes, DVD's, cell phones and assorted small e-scrap. They will also shred server drives.

Also includes waste bin full/door open indicator with auto stop and energy savings mode.



AMS-300 HD-SSD shown with optional output conveyor

Specifications		
	AMS-150 HD-SSD	AMS-300 HD-SSD
Motor	1.5 HP	3.0 HP
SSD Width	3.8"	3/8"
HDD Shred Width	1.5" or 3/4"	1.5" or 3/4"
Infeed	5" W x 2" H	5" W x 2" H
Dimensions	53"W x 21"D x 43"H	53"W x 21"D x 43"H
Weight	1400 lbs	1400 lbs
Electric	120/208/230/460V	120/208/230/460V*
Weight	1400 lbs	1400 lbs
THROUGHPUT		
SSD 3/8" & 1.5"	180 - 200 DPH	550 - 600 DPH
HDD 3/8" & 1.5"	180 - 200 DPH	550 - 600 DPH
Server Drives 3/8" & 1.5"	90 - 100 DPH	275 - 300 DPH
Server Drives 3/8" & 3/4"	45 - 50 DPH	135 - 150 DPH

* Requires 3 Phase

Dual Cutting Chambers Are Available As Options On All Shredder Models



DESTRUCTDATA
MEDIA SANITIZATION SOLUTIONS

34 Dover Point Road • Unit 300 • Dover, NH 03820 | 800-781-4799 | info@DestructData.com

www.destructdata.com