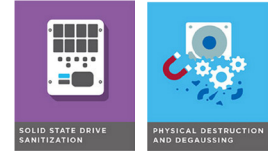


# Mid Volume HDD Shredders

## 400 - 2000 Drives / Hour Throughput\*



### Hard Drive Only | Combo HDD/SSD | SSD Only Models



**Model 1000 HD**

#### 5.0 | 7.5 | 10.0 HP MODELS

Choice of Shred Widths

**HDD Only:** Slow speed, high torque models securely destroy Hard Drives up to 1" thick, plus backup tapes, DVD's, cell phones and assorted small e-scrap. Three models, 3 shred widths available.

**HDD / SSD Combo:** Features dual head cutting chamber for shredding HDD and SSDs. Individual chambers can only be used for the designated type of drive.

*HDD shred widths: 3/4" and 1-1/2".*

*SSD shred widths: 3/8"*

**SSD Only:** Shreds SSDs, thumb drives, cell phones, tablets, memory cards & circuit boards to 3/8" particles. Small shred size is required to destroy all data storage memory chips in SSDs.

Also shreds server drives. Includes waste bin full/door open indicator with auto stop and energy savings mode. Can be stationary or placed in trucks for mobile hard drive shredding.

Manufactured in the U.S.

#### HDD Only Models

MODEL	HP	Shred Width	Standard Drives/Hour	Server Drives / Hour
1000HD	10	1-1/2"	2000	1000
750HD	7.5	1-1/2"	1800	900
500HD	5	1-1/2"	1500	750
1000HD	10	1"	1500	750
750HD	7.5	1"	1350	675
1000HD	10	3/4"	1000	500
750HD	7.5	3/4"	900	450

#### Combination HDD & SSD Models

MODEL	SSD Shred	HDD Shred	SSD /Hour	HDD / Hour
1000HD-SSD	3/8"	1-1/2"	2000	2000
1000HD-SSD	3/8"	1"	2000	1500
1000HD-SSD	3/8"	3/4"	2000	1000
750HD-SSD	3/8"	1-1/2"	1800	1800
750HD-SSD	3/8"	1"	1800	1350
750HD-SSD	3/8"	3/4"	1800	900
500-HD-SSD	3/8"	1-1/2"	1500	1500

#### SSD Only Models

MODEL	SSD Shred	HDD Shred	SSD /Hour	HDD / Hour
1000-SSD	3/8"	1-1/2"	2000	-
750-SSD	3/8"	1-1/2"	1800	-
500-SSD	3/8"	1-1/2"	1500	-

\* Depending on model and shred size



**Model 1000 HD-SSD**  
destroys HDDs and SSDs



**DESTRUCTDATA**  
MEDIA SANITIZATION SOLUTIONS

[www.destructdata.com](http://www.destructdata.com)

34 Dover Point Road • Unit 300 • Dover, NH 03820 | 800-781-4799 | [info@DestructData.com](mailto:info@DestructData.com)